

Oregon Wild



Crater Lake Wilderness

Stan Newman

Protecting an Oregon Icon

Oregon's only National Park is threatened and needs Wilderness protection

Crater Lake and its surrounding wildlands have inspired people for generations providing the postcard image that encapsulates Oregon's beauty and commitment to conservation. Every year, Crater Lake attracts half a million visitors who come to gaze into its pure, clean water, to marvel at its unique geology, and to explore its rugged backcountry.

The natural beauty of Crater Lake extends far beyond Wizard Island and the caldera. It includes 543,000 acres pristine roadless lands both inside and outside of the official boundaries of the park (not including the lodge or park roads). Places such as the Pumice Desert; the craggy spires and wild forests of Mount Thielsen; the rugged backcountry of Mount Bailey; and the headwaters of the Rogue and Umpqua Rivers.

At 1,943 feet deep, Crater Lake is the deepest lake in the country.

Threats to the Crater Lake Wildlands

Choppers and chopping

A helicopter tour operator is seeking a permit for flights into the park, over its backcountry, and along the crater rim. The noise pollution from these flights would destroy the quiet of the park, disrupt wildlife, and diminish the experience for the vast majority of park visitors. Unfortunately the proposal for noisy helicopter flights is not the only threat to the wildlands surrounding Crater Lake. A misguided Forest Service logging project, known as D-Bug, proposes to log thousands of acres of proposed Wilderness that extends just north of the park boundary.



Don Baccus

Natural treasures like Pelican Butte provide excellent habitat for nesting bald eagles.

Wildlife in the Crater Lake Wilderness:

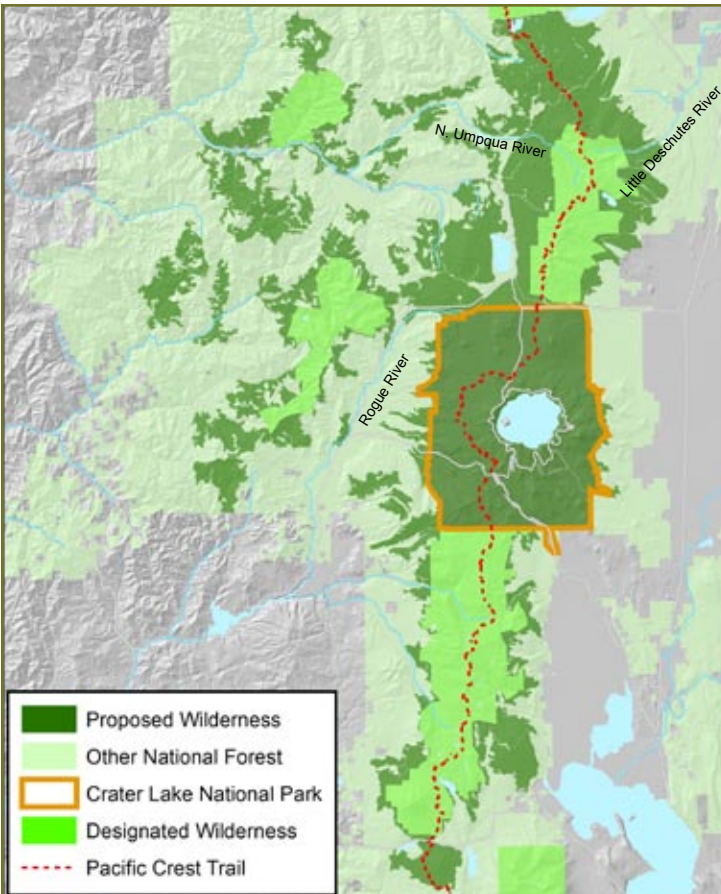
- Bald eagles
- northern spotted owls
- Roosevelt elk
- pine marten
- black bear
- fisher

In addition, the high Cascades headwaters of the Rogue and Umpqua Rivers are critical to maintaining healthy runs of coho salmon, chinook salmon and steelhead.



Ken Deveney

The Pacific Crest Trail transects a large part of the Crater Lake Wilderness proposal including places like Sawtooth Mountain and the Mount Thielsen Wilderness additions.



<-- The Crater Lake Wilderness proposal would create a linked network of protected areas providing an 90 mile intact wildlife corridor along the crest of the Cascades, shielding threatened species from the impacts of climate change.

Contact Senator Wyden!

• Senator Ron Wyden has already stood up for Crater Lake, opposing the plan to fly noisy helicopters over the park. Encourage him to go the rest of the way and protect the Crater Lake Wilderness. Call him today at (503) 326-7525

• **Join** Oregon Wild and help us protect the wildlands, wildlife, and waters that make our state so special.

For more information contact:

Erik Fernandez, Oregon Wild
5825 N. Greeley Ave.
Portland, Oregon 97217
ef@oregonwild.org
☎ (503) 283-6343 ext. 202



 Printed on 100% post-consumer recycled paper

www.oregonwild.org